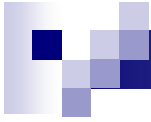




TRAIDENIS

FIBERGLASS MODULAR TANKS



PURPOSE

Modular tanks are designed to store:

- Drinking water;
- Technical water;
- Wastewater;
- Liquid manure;
- Chemically aggressive liquid.

BENEFITS

Benefits of modular tanks:

- Manufactured according to individual order;
- Wide size variety (m^3 , \emptyset and L);
- Custom panel production possibility;
- High quality materials;
- Easy delivery and installation.

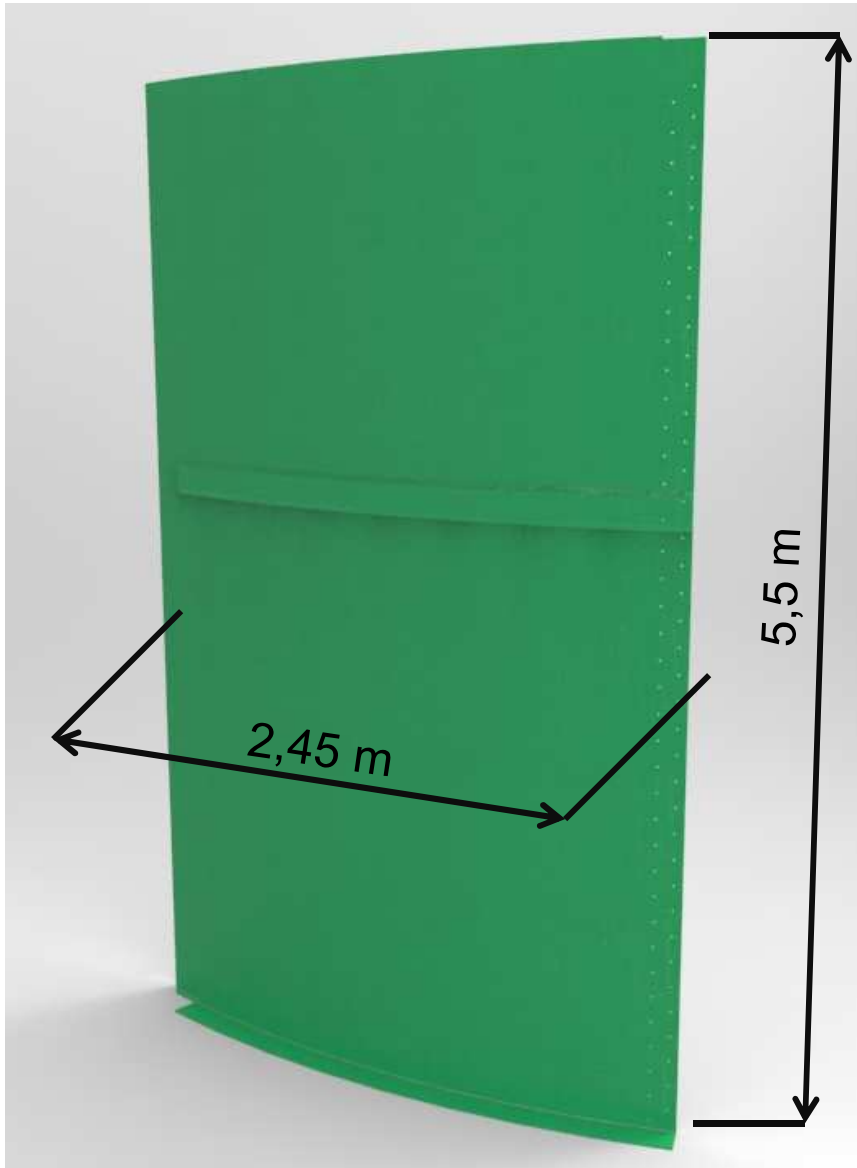
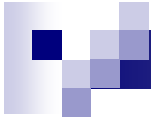


Tank dimensions according to customer requirements

(panel height (L) can be 1 to 7,5 m and
diameter (Ø) 8 to 50 m and larger)

Number of panels	Diameter (m)	Height (m)				Concrete surface area (m2)
		1	2,5	5	7,5	
		Volume (m³)				
11	8	51	128	255	383	64,4
18	13,2	137	343	685	1028	136,5
24	17,6	243	608	1215	1823	271
30	22	380	950	1900	2850	314
36	26,4	546	1530	2730	4095	588
42	30	708	1770	3540	5300	756

(examples of sizes)

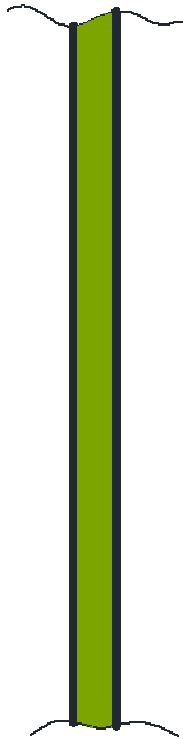


Tanks are made of standard fiberglass panels:

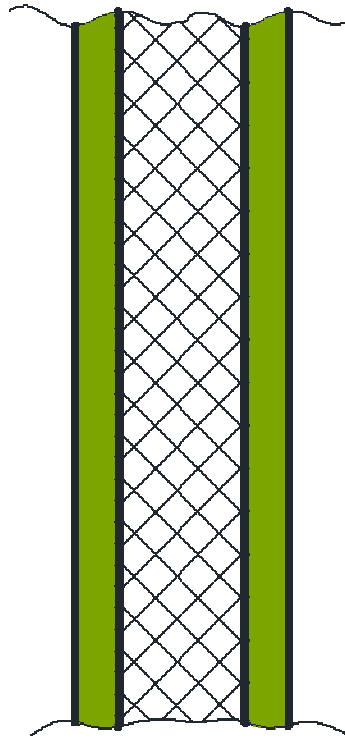
- Panel width – 2,45 m
- Panel height – from 1 to 7,5 m
- Panel thickness – from 7 mm and thicker



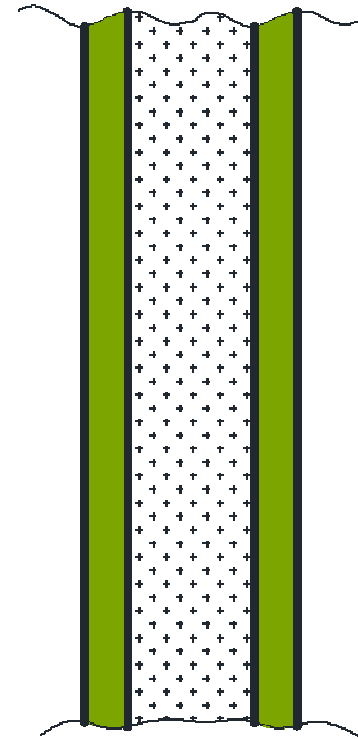
PANEL TYPES



Single-wall
panel



Double-wall panel with
honeycomb filling



Double-wall panel with
insulation foam filling

Filling layer thickness according to customers



TRANSPORTATION

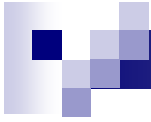
Panels are transported to assembly site in a lorry



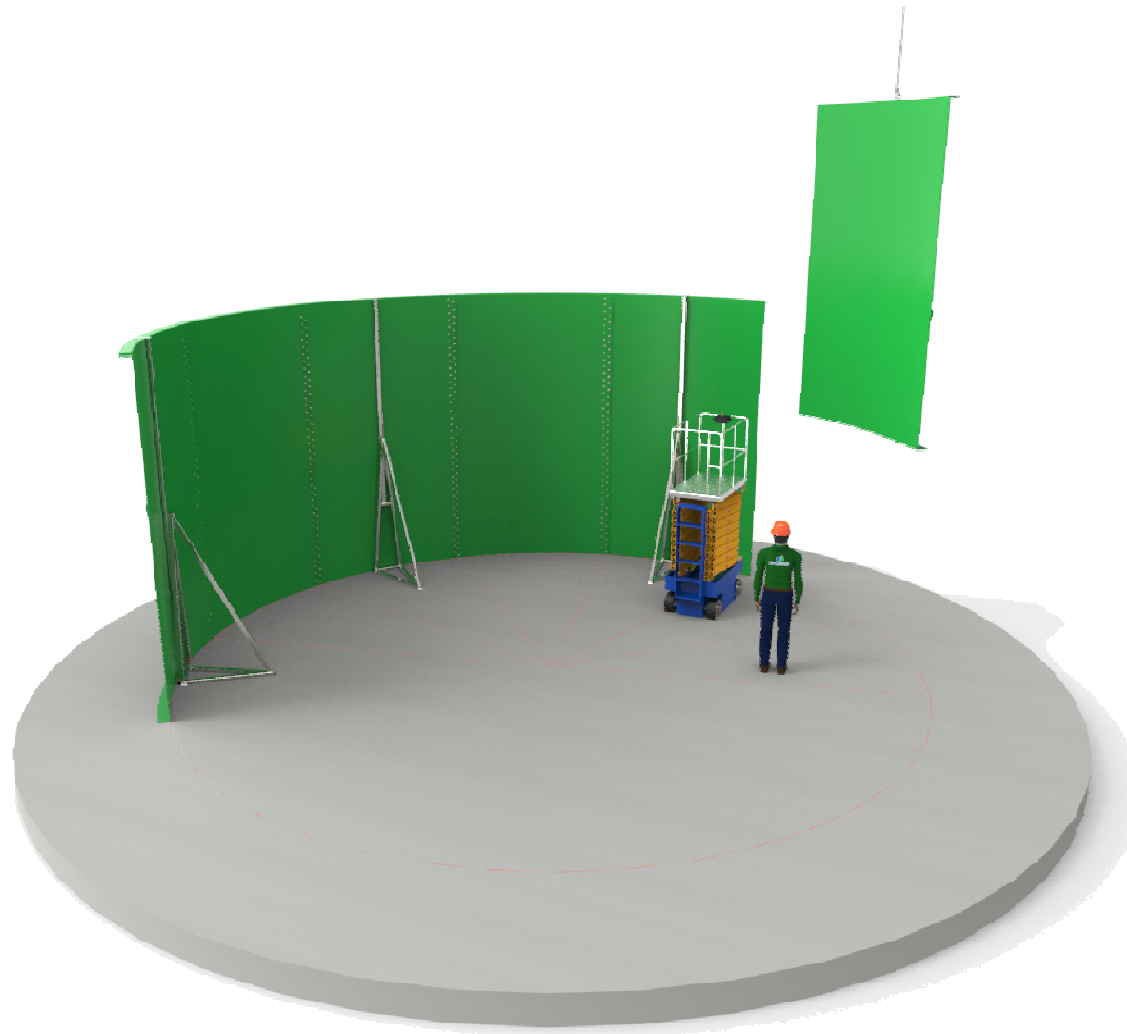


Packaged panels easily loaded into the
standard semi-truck



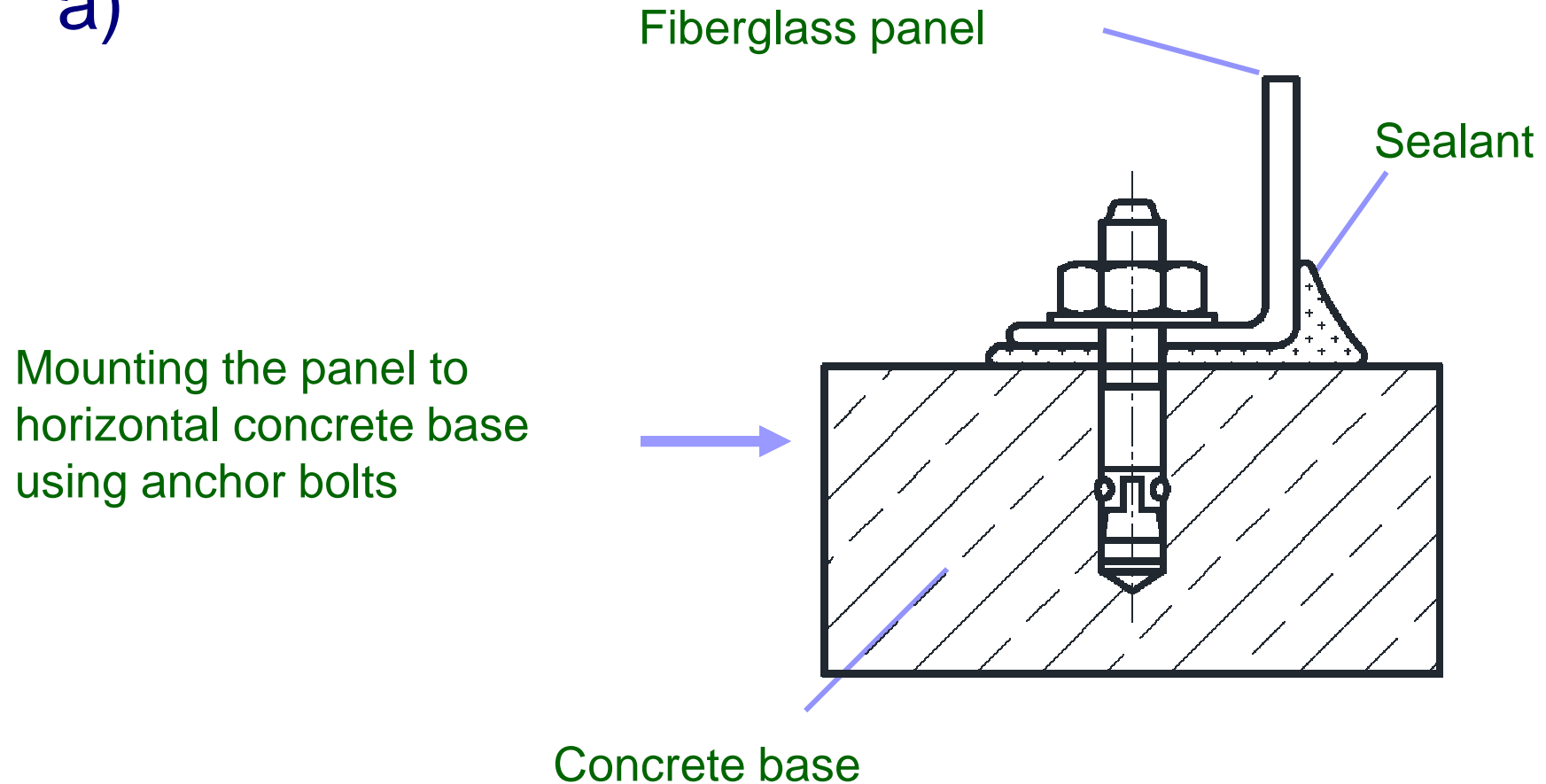


Modular tanks mounted in place on the pre-prepared concrete base.



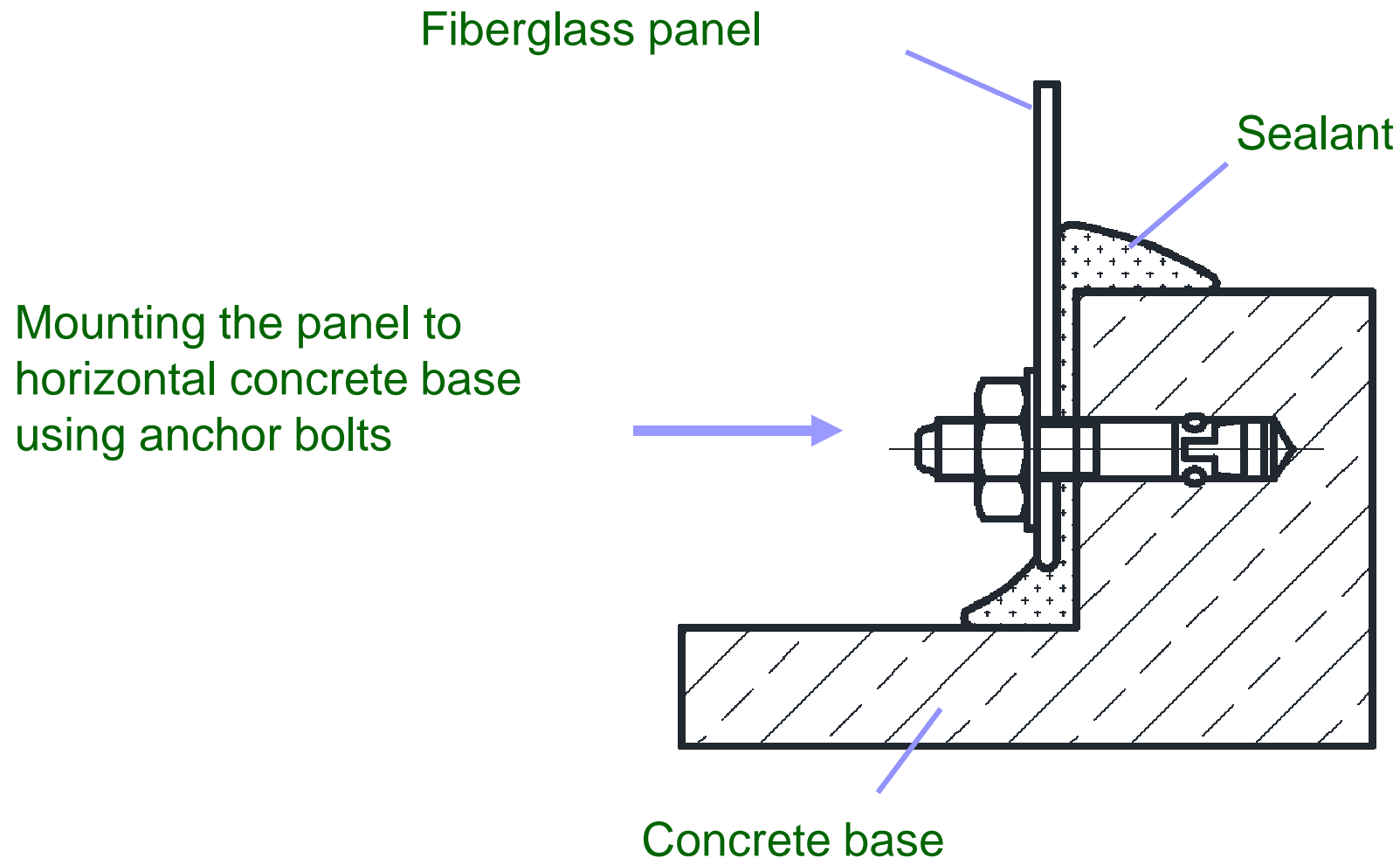
Panels can be mounted to the concrete base in three ways :

a)



Panels can be mounted to the concrete base in three ways :

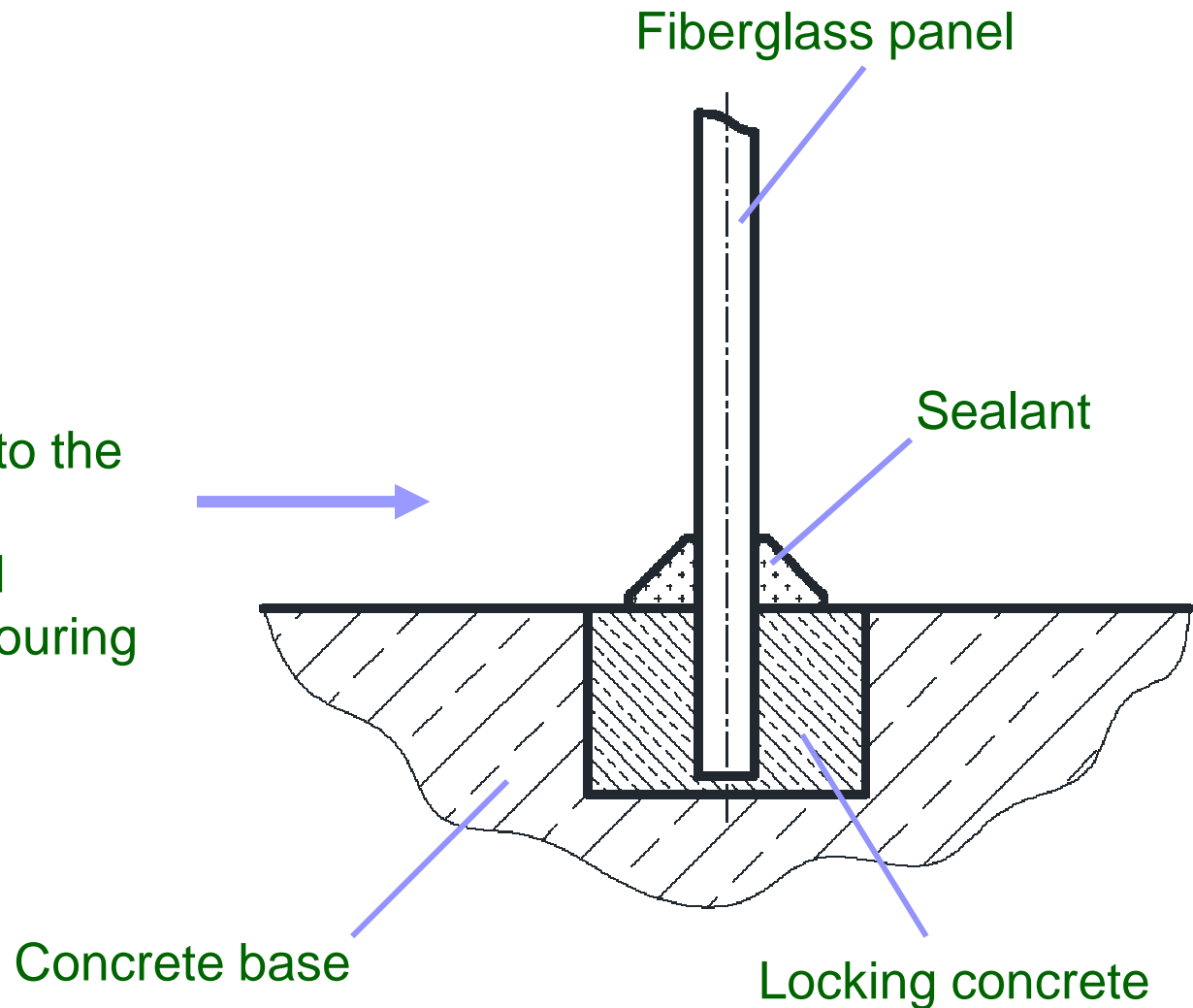
b)



Panels can be mounted to the concrete base in three ways :

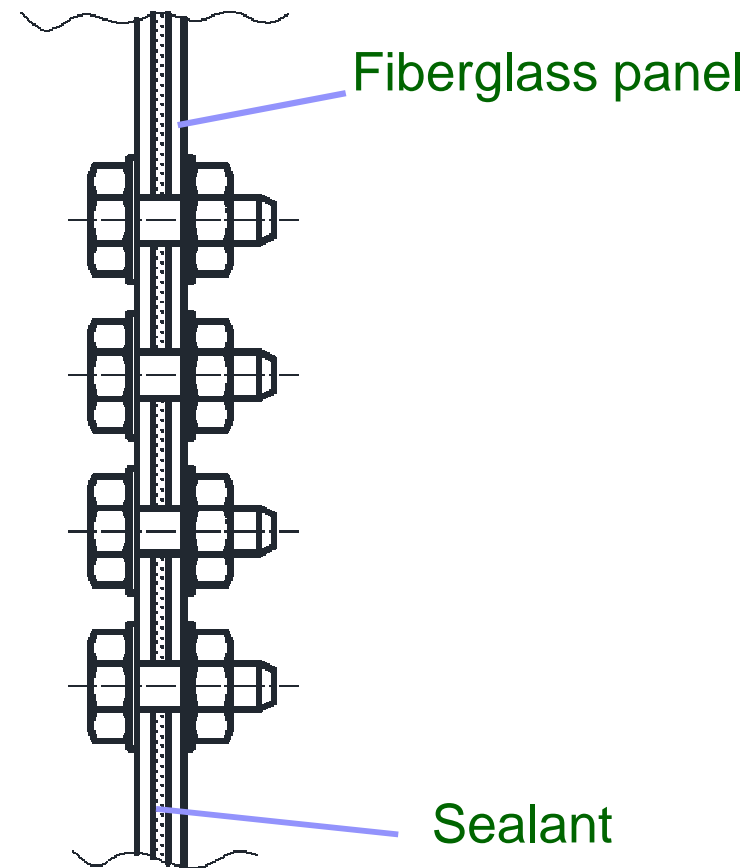
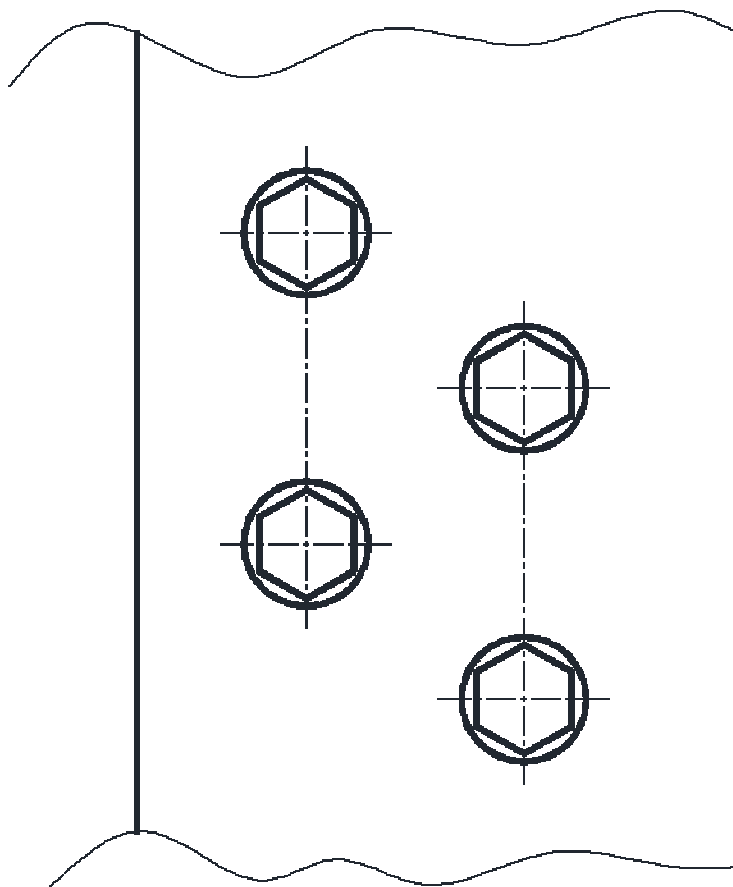
c)

Panel is mounted to the steel profile in the concrete base and strengthened by pouring concrete

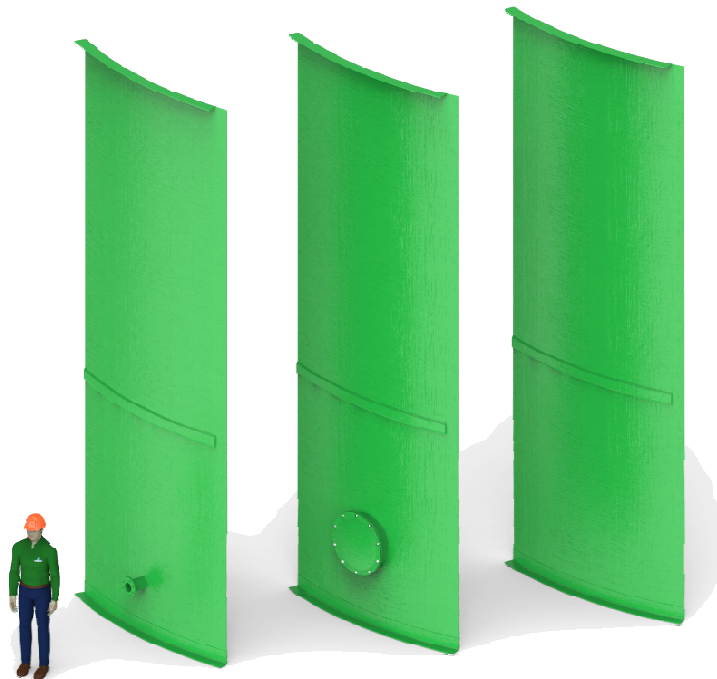




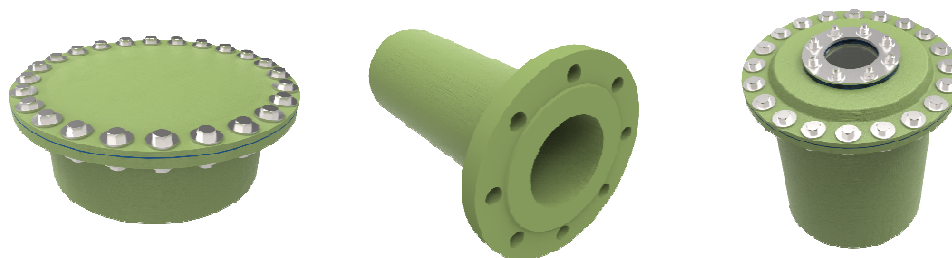
Panels are connected using two rows of screws and special sealant layer



FLANGES, COUPLINGS, TRANSITION COUPLINGS



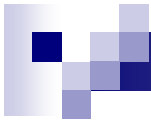
Flanges, couplings, transition couplings can be formed into the segment.



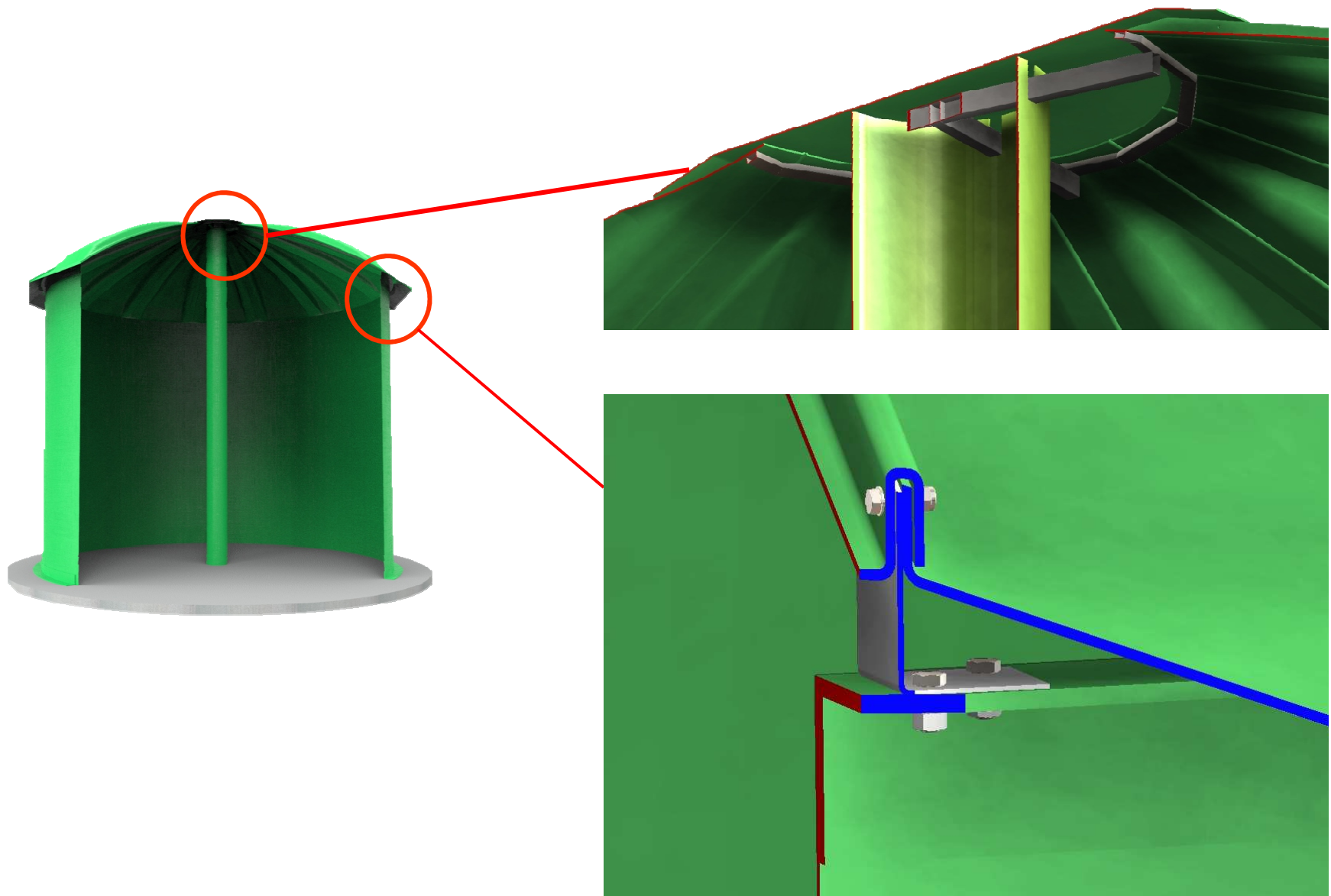
Stainless steel connecting bolts and anchors are supplied.

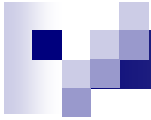


According to customers requests, tanks can be supplied including dome-shaped modular fiberglass roof and central support column.



ROOF MOUNTING





Dome-shaped roof benefits :

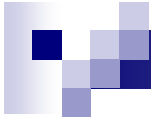
- Structural stiffness and strength;
- Effective water flow from the roof;
- Simple mounting.



According to customer requests, a tank can be supplied with various types of ladders, platforms, inspection manholes and other optional equipment.

- Fiberglass tanks are durable.
- Doesn't require intensive care.
- Tanks are designed and manufactured using modern technology.
- Various sizes, (\varnothing , m^3 , L) panel, mounting type choices and optional equipment choices lets you create a tank meeting any customer's requirements.

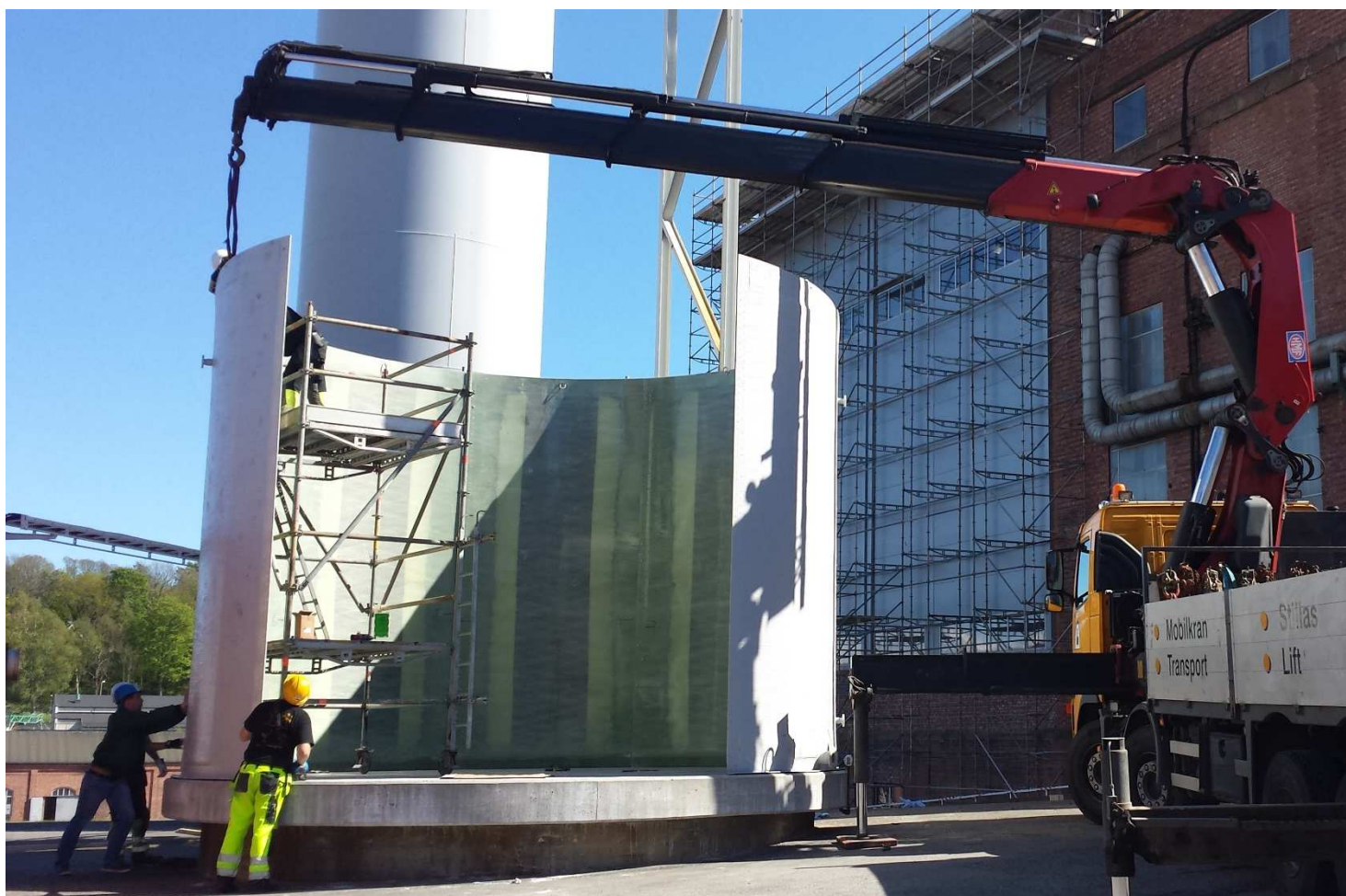




DOME SHAPED MODULAR ROOF (DN 21,05 M) FROM GRP SEGMENTS FOR RESERVOIR FOR STORAGE OF LIQUID MANURE IN KEDAINIAI, LITHUANIA



100 M³ MODULAR TANK FROM GRP (DN - 6,62 M, H – 4,91 M)
AND DOME SHAPED MODULAR ROOF (DN 6,62 M)
(SARPSBORG TOWN) NORWAY

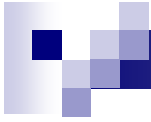


100 M³ MODULAR TANK FROM GRP (DN - 6,62 M, H – 4,91 M)
AND DOME SHAPED MODULAR ROOF (DN 6,62 M)
(SARPSBORG TOWN) NORWAY



100 M³ MODULAR TANK FROM GRP (DN - 6,62 M, H – 4,91 M)
AND DOME SHAPED MODULAR ROOF (DN 6,62 M)
(SARPSBORG TOWN) NORWAY





THANK YOU FOR YOUR
ATTENTION

www.traidenis.com